

1-Bedroom

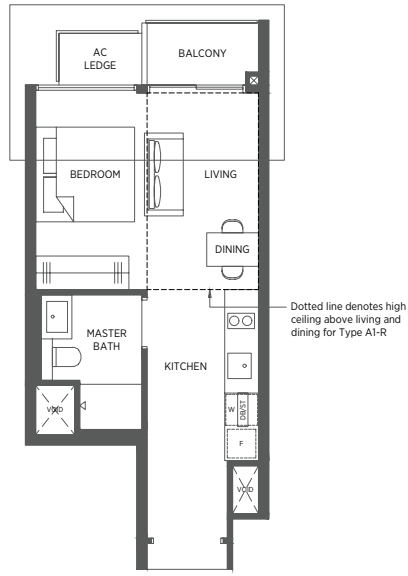
TYPE A1 TYPE A1-R

39 sq m | 420 sq ft 48 sq m | 517 sq ft

#02-06 to #17-06
#02-15 to #17-15
#02-20 to #17-20*
#02-53 to #17-53*
#02-66 to #17-66
#02-75 to #17-75

#18-06
#18-15
#18-20*
#18-53*
#18-66
#18-75

Incl. of 9 sq m | 97 sq ft of void area (high ceiling) above living & dining



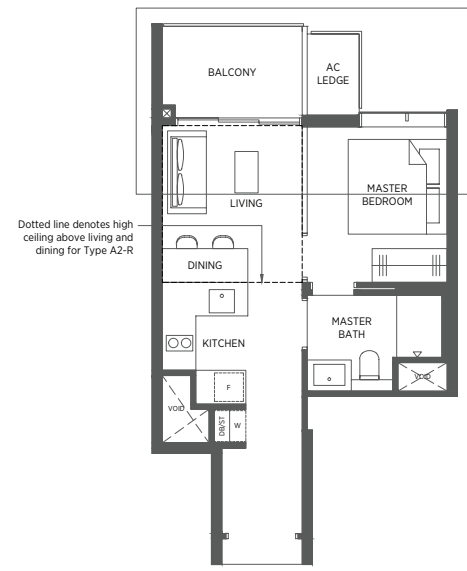
TYPE A2 TYPE A2-R

42 sq m | 452 sq ft 51 sq m | 549 sq ft

#02-05 to #17-05
#02-14 to #17-14
#02-21 to #17-21*
#02-54 to #17-54*
#02-65 to #17-65
#02-74 to #17-74

#18-05
#18-14
#18-21*
#18-54*
#18-65
#18-74

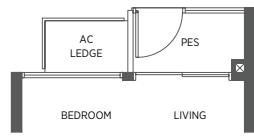
Incl. of 9 sq m | 97 sq ft of void area (high ceiling) above living & dining



TYPE A1-P

39 sq m | 420 sq ft

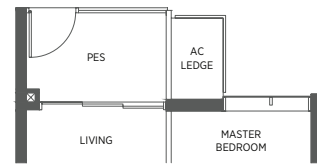
#01-06
#01-15
#01-20*
#01-53*
#01-66
#01-75



TYPE A2-P

42 sq m | 452 sq ft

#01-05
#01-14
#01-21*
#01-54*
#01-65
#01-74



1-Bedroom + Study

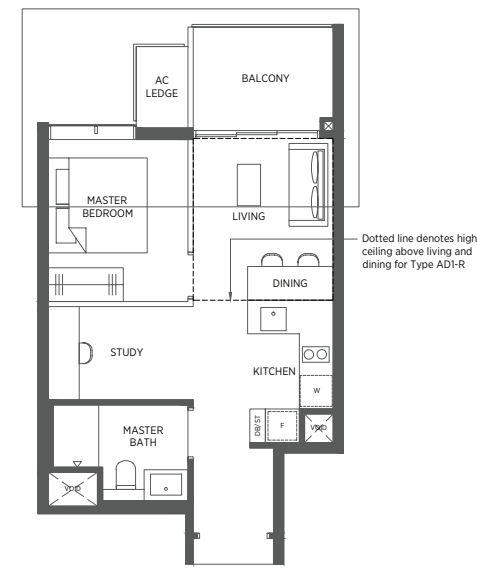
TYPE AD1 TYPE AD1-R

48 sq m | 517 sq ft 57 sq m | 614 sq ft

#02-52 to #17-52*
#02-67 to #17-67
#02-76 to #17-76

#18-52*
#18-67
#18-76

Incl. of 9 sq m | 97 sq ft of void area (high ceiling) above living & dining



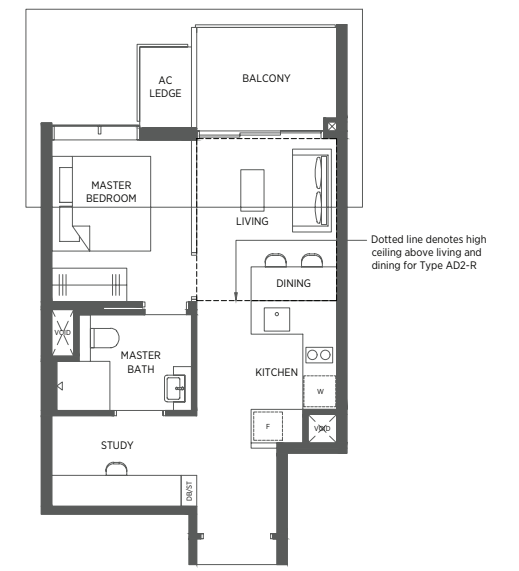
TYPE AD2 TYPE AD2-R

49 sq m | 527 sq ft 58 sq m | 624 sq ft

#02-07 to #17-07
#02-16 to #17-16
#02-19 to #17-19*

#18-07
#18-16
#18-19*

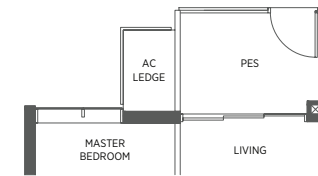
Incl. of 9 sq m | 97 sq ft of void area (high ceiling) above living & dining



TYPE AD1-P

48 sq m | 517 sq ft

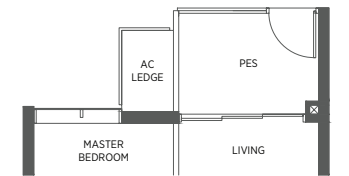
#01-52*
#01-67
#01-76



TYPE AD2-P

49 sq m | 527 sq ft

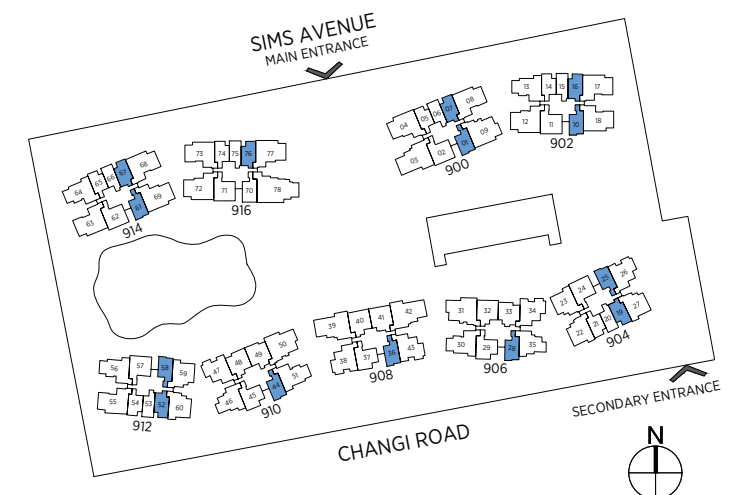
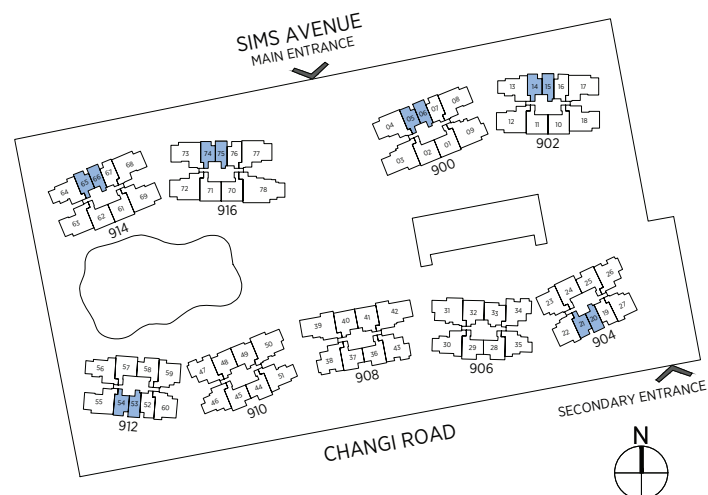
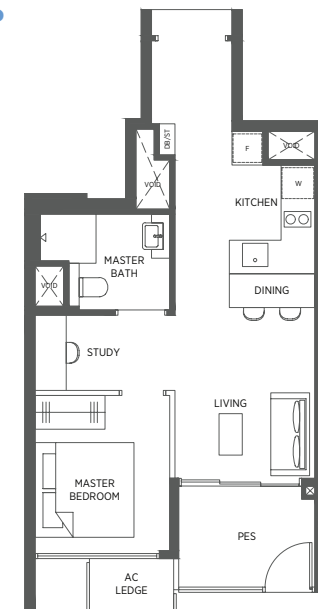
#01-07
#01-16



TYPE AD3-P

49 sq m | 527 sq ft

#01-01
#01-10
#01-25*
#01-28
#01-36
#01-44
#01-58*
#01-61



* Denotes mirror image

Area includes a/c ledge, balcony and void area (high ceiling). The plans are subject to change as may be required or approved by the relevant authorities. Areas are approximate measurements only and are subject to final survey. Plans are not drawn to scale and do not form part of the contract.

* Denotes mirror image

Area includes a/c ledge, balcony and void area (high ceiling). The plans are subject to change as may be required or approved by the relevant authorities. Areas are approximate measurements only and are subject to final survey. Plans are not drawn to scale and do not form part of the contract.

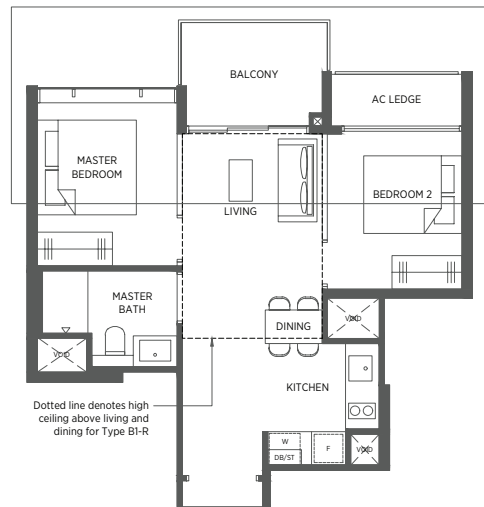
2-Bedroom

TYPE B1 TYPE B1-R

54 sq m | 581 sq ft 65 sq m | 700 sq ft

#02-33 to #17-33 #18-33

Incl. of 11 sq m | 118 sq ft of void area (high ceiling) above living & dining

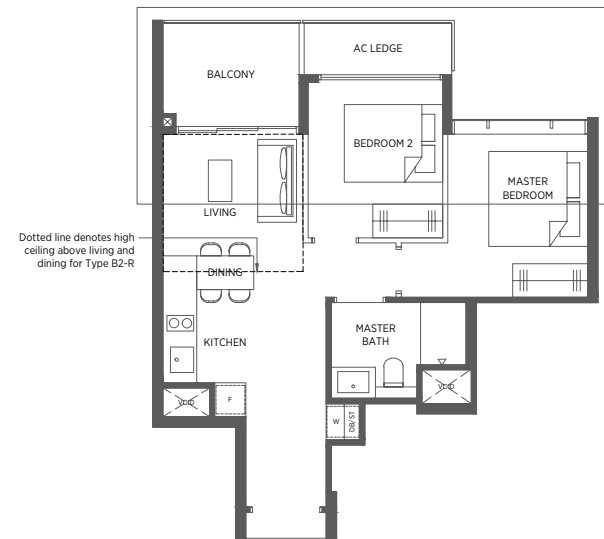


TYPE B2 TYPE B2-R

56 sq m | 603 sq ft 64 sq m | 689 sq ft

#02-32 to #17-32 #18-32

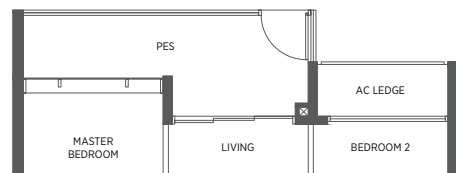
Incl. of 8 sq m | 86 sq ft of void area (high ceiling) above living & dining



TYPE B1-P

58 sq m | 624 sq ft

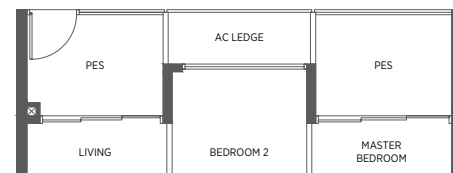
#01-33



TYPE B2-P

61 sq m | 657 sq ft

#01-32



2-Bedroom

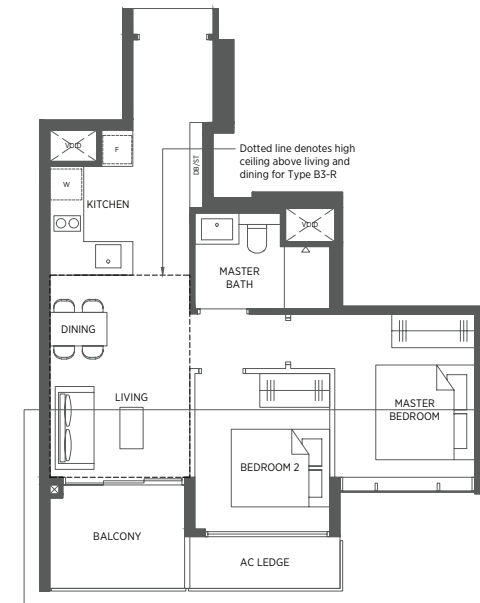
TYPE B3 TYPE B3-R

59 sq m | 635 sq ft 70 sq m | 753 sq ft

#02-28 to #17-28*
#02-29 to #17-29
#02-36 to #17-36*
#02-37 to #17-37
#02-44 to #17-44*
#02-45 to #17-45

#18-28*
#18-29
#18-36*
#18-37
#18-44*
#18-45

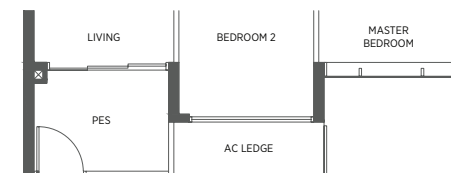
Incl. of 11 sq m | 118 sq ft of void area (high ceiling) above living & dining



TYPE B3-P

59 sq m | 635 sq ft

#01-29
#01-37
#01-45



TYPE B4 TYPE B4-R TYPE B4-R1

59 sq m | 635 sq ft 69 sq m | 743 sq ft 70 sq m | 753 sq ft

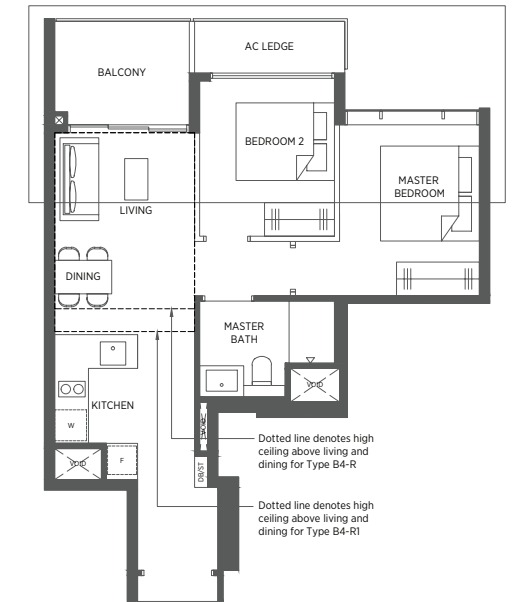
#02-24 to #17-24
#02-25 to #17-25*
#02-58 to #17-58*

#18-25*
#18-58*

Incl. of 10 sq m | 108 sq ft of void area (high ceiling) above living & dining

#18-24

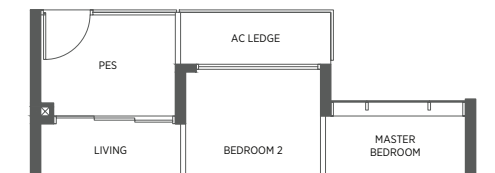
Incl. of 11 sq m | 118 sq ft of void area (high ceiling) above living & dining



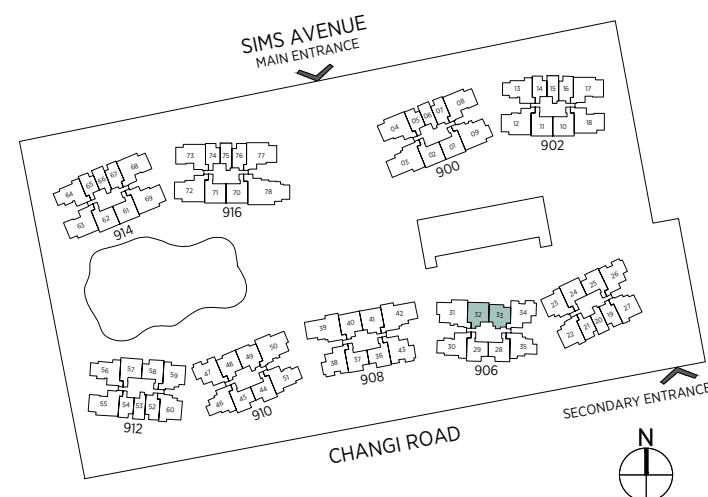
TYPE B4-P

59 sq m | 635 sq ft

#01-24

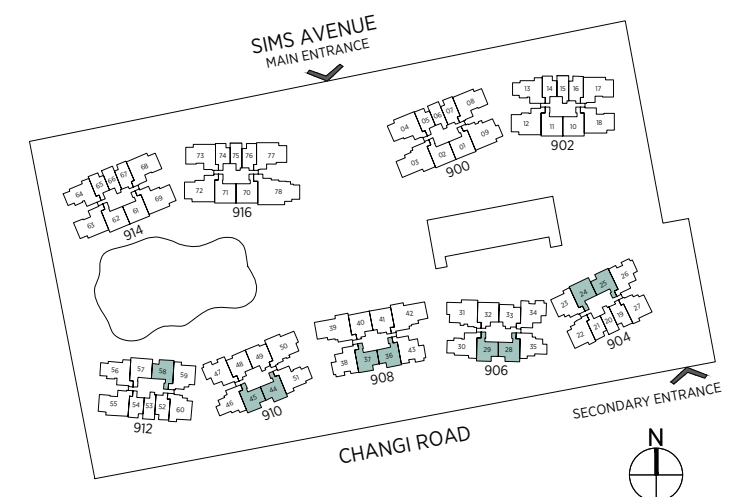


Area includes a/c ledge, balcony and void area (high ceiling). The plans are subject to change as may be required or approved by the relevant authorities. Areas are approximate measurements only and are subject to final survey. Plans are not drawn to scale and do not form part of the contract.



* Denotes mirror image

Area includes a/c ledge, balcony and void area (high ceiling). The plans are subject to change as may be required or approved by the relevant authorities. Areas are approximate measurements only and are subject to final survey. Plans are not drawn to scale and do not form part of the contract.



2-Bedroom (Premium)

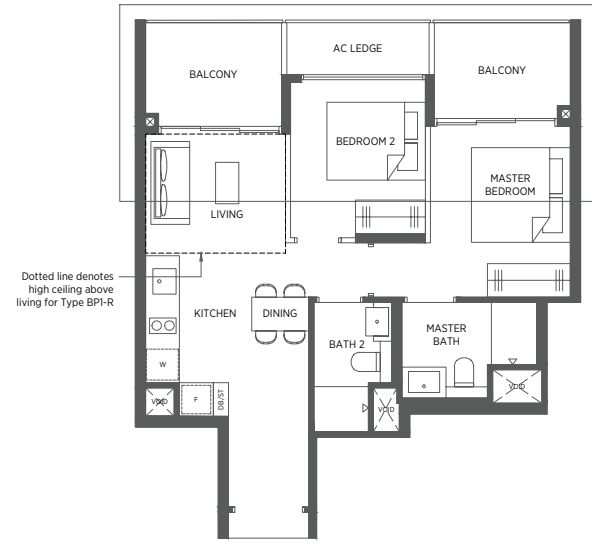
TYPE BP1 TYPE BP1-R

65 sq m | 700 sq ft 72 sq m | 775 sq ft

#02-40 to #17-40
#02-41 to #17-41*

#18-40
#18-41*

Incl. of 7 sq m | 75 sq ft of void area (high ceiling) above living



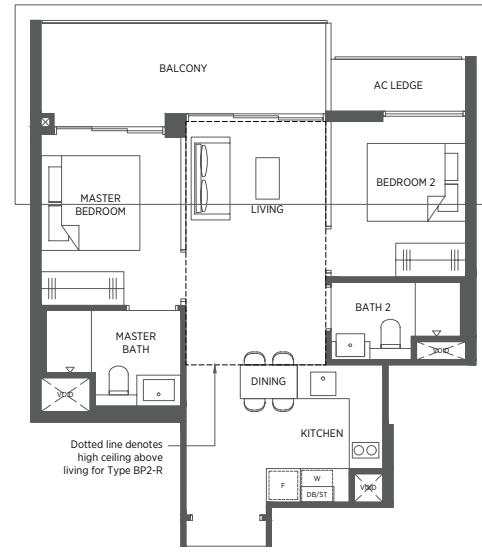
TYPE BP2 TYPE BP2-R

66 sq m | 710 sq ft 80 sq m | 861 sq ft

#02-49 to #17-49

#18-49

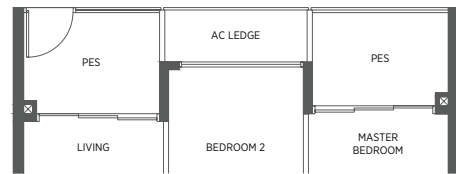
Incl. of 14 sq m | 151 sq ft of void area (high ceiling) above living



TYPE BP1-P

65 sq m | 700 sq ft

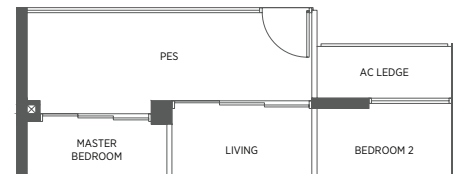
#01-40
#01-41*



TYPE BP2-P

66 sq m | 710 sq ft

#01-49



2-Bedroom (Premium)

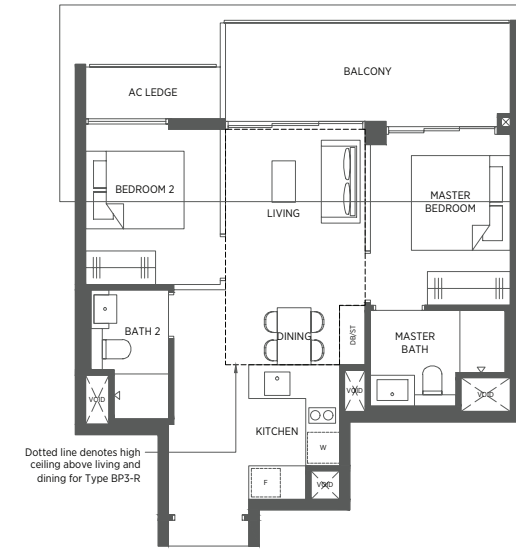
TYPE BP3 TYPE BP3-R

67 sq m | 721 sq ft 80 sq m | 861 sq ft

#02-48 to #17-48

#18-48

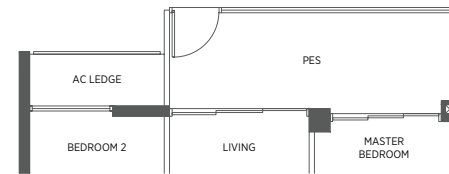
Incl. of 13 sq m | 140 sq ft of void area (high ceiling) above living & dining



TYPE BP3-P

67 sq m | 721 sq ft

#01-48



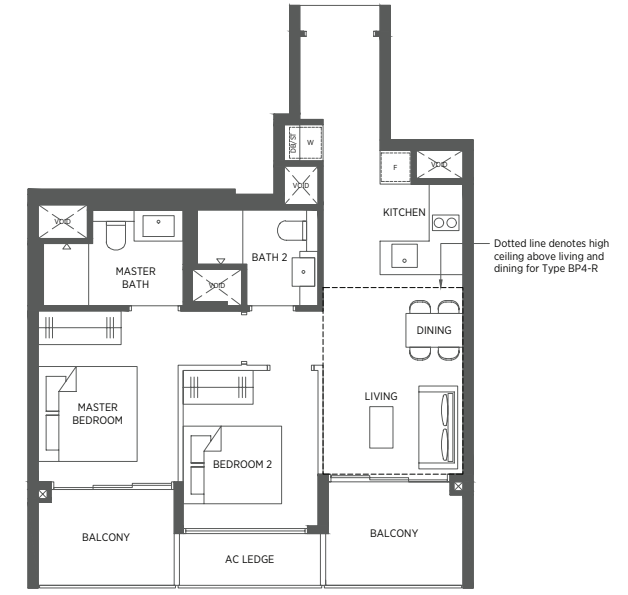
TYPE BP4 TYPE BP4-R

68 sq m | 732 sq ft 79 sq m | 850 sq ft

#02-70 to #17-70

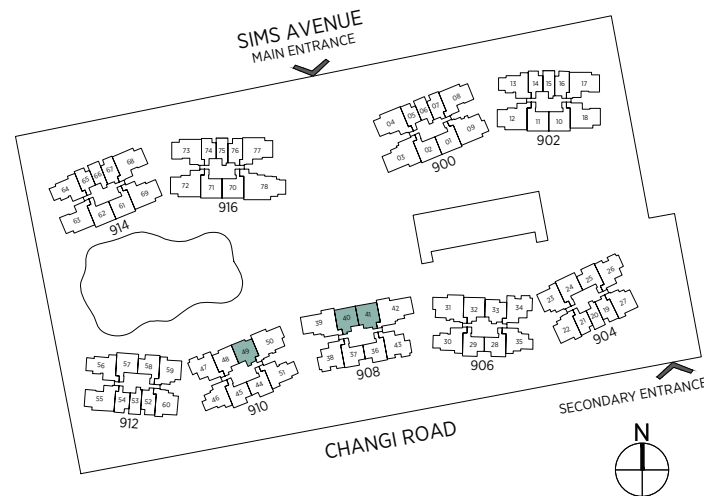
#18-70

Incl. of 11 sq m | 118 sq ft of void area (high ceiling) above living & dining

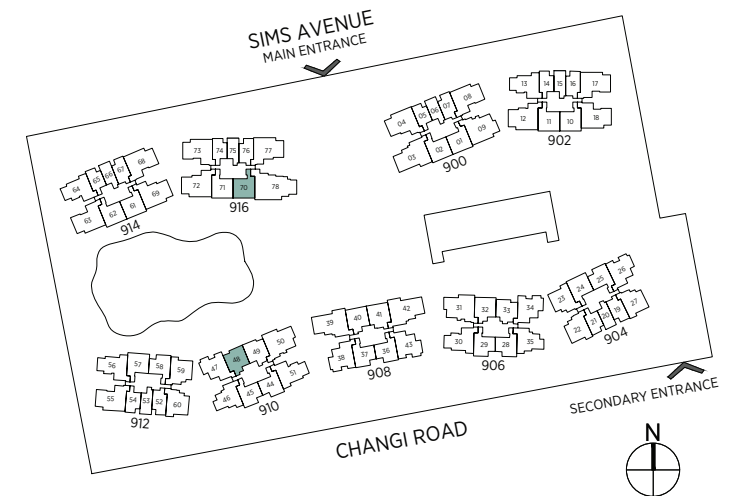


* Denotes mirror image

Area includes a/c ledge, balcony and void area (high ceiling). The plans are subject to change as may be required or approved by the relevant authorities. Areas are approximate measurements only and are subject to final survey. Plans are not drawn to scale and do not form part of the contract.



Area includes a/c ledge, balcony and void area (high ceiling). The plans are subject to change as may be required or approved by the relevant authorities. Areas are approximate measurements only and are subject to final survey. Plans are not drawn to scale and do not form part of the contract.



2-Bedroom (Premium)

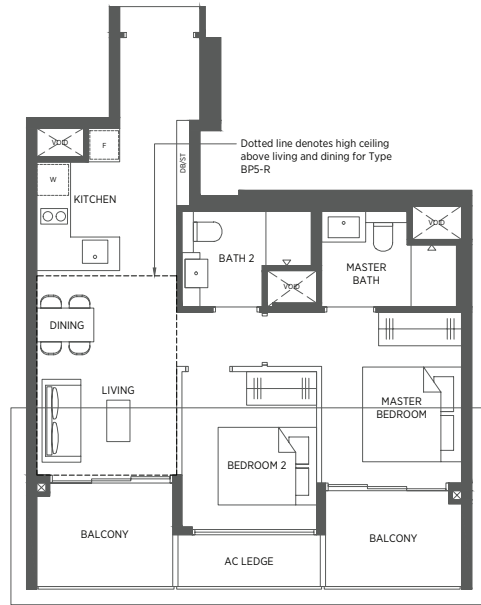
TYPE BP5 TYPE BP5-R

69 sq m | 743 sq ft 80 sq m | 861 sq ft

#02-01 to #17-01*
#02-02 to #17-02
#02-10 to #17-10*
#02-11 to #17-11
#02-57 to #17-57*
#02-61 to #17-61*
#02-62 to #17-62
#02-71 to #17-71

#18-01*
#18-02
#18-10*
#18-11
#18-57*
#18-61*
#18-62
#18-71

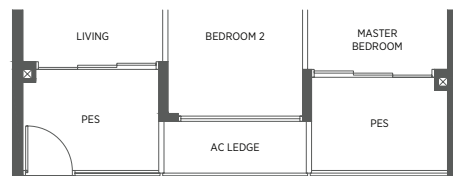
Incl. of 11 sq m | 118 sq ft of void area (high ceiling) above living & dining



TYPE BP5-P

69 sq m | 743 sq ft

#01-02
#01-11
#01-57*
#01-62
#01-71



2-Bedroom + Study

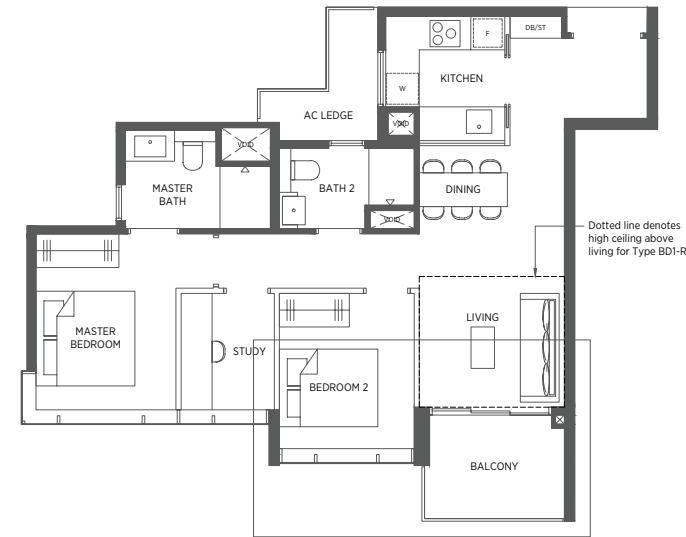
TYPE BD1 TYPE BD1-R

77 sq m | 829 sq ft 85 sq m | 915 sq ft

#02-35 to #17-35*
#02-46 to #17-46

#18-35*
#18-46

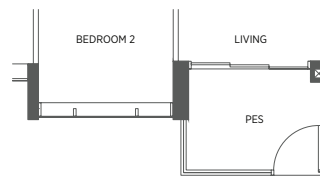
Incl. of 8 sq m | 86 sq ft of void area (high ceiling) above living



TYPE BD1-P

77 sq m | 829 sq ft

#01-35*
#01-46



2-Bedroom + Study

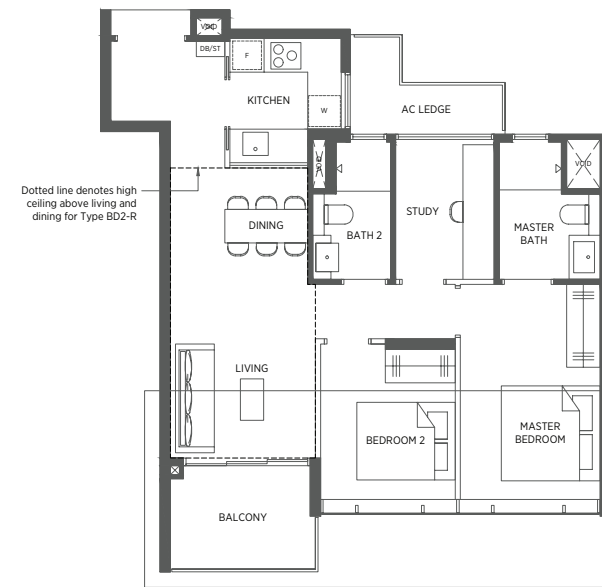
TYPE BD2 TYPE BD2-R

78 sq m | 840 sq ft 95 sq m | 1023 sq ft

#02-22 to #17-22*
#03-27 to #17-27
#02-60 to #17-60

#18-22*
#18-27
#18-60

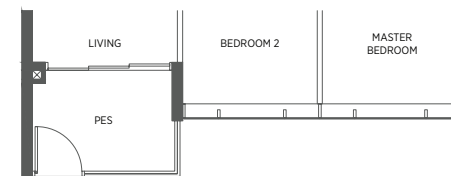
Incl. of 17 sq m | 183 sq ft of void area (high ceiling) above living & dining



TYPE BD2-P

78 sq m | 840 sq ft

#01-22*
#01-60



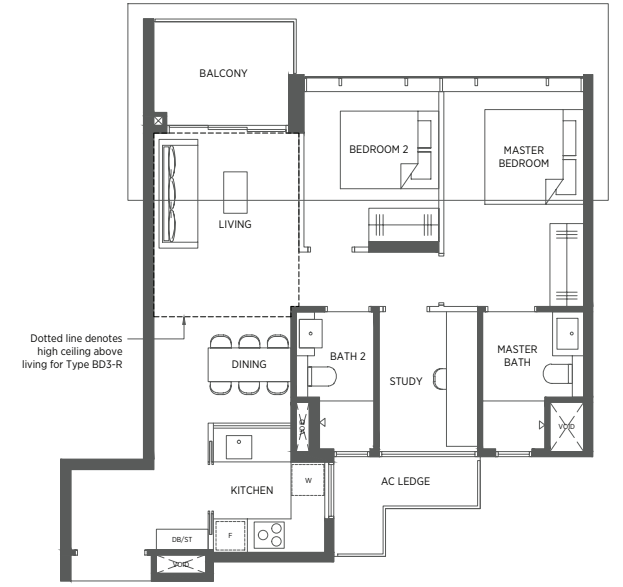
TYPE BD3 TYPE BD3-R

78 sq m | 840 sq ft 89 sq m | 958 sq ft

#02-23 to #17-23*
#02-59 to #17-59

#18-23*
#18-59

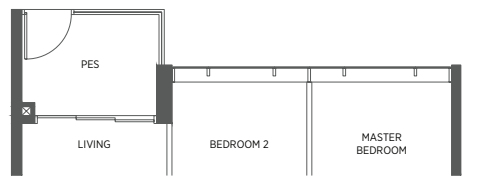
Incl. of 11 sq m | 118 sq ft of void area (high ceiling) above living



TYPE BD3-P

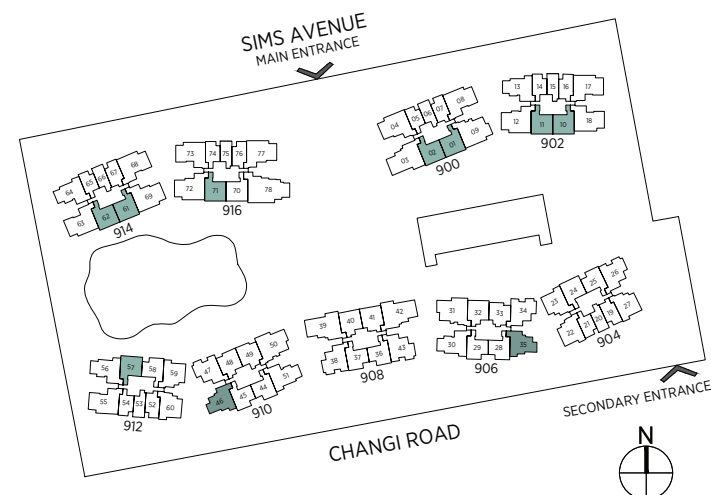
78 sq m | 840 sq ft

#01-23*
#01-59



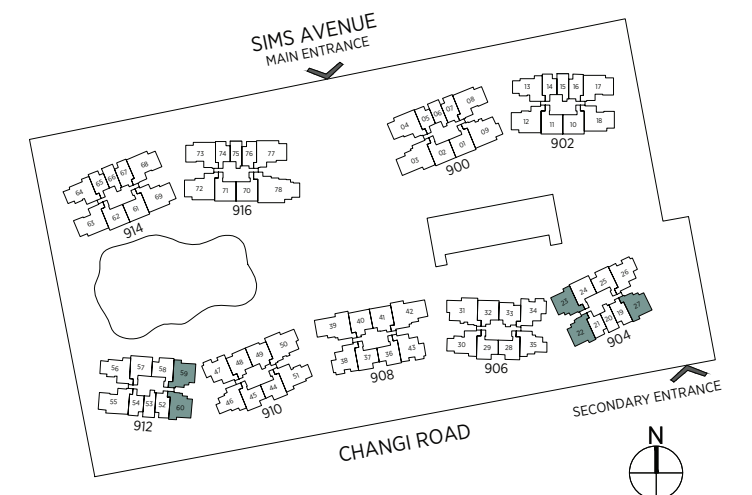
* Denotes mirror image

Area includes a/c ledge, balcony and void area (high ceiling). The plans are subject to change as may be required or approved by the relevant authorities. Areas are approximate measurements only and are subject to final survey. Plans are not drawn to scale and do not form part of the contract.



* Denotes mirror image

Area includes a/c ledge, balcony and void area (high ceiling). The plans are subject to change as may be required or approved by the relevant authorities. Areas are approximate measurements only and are subject to final survey. Plans are not drawn to scale and do not form part of the contract.

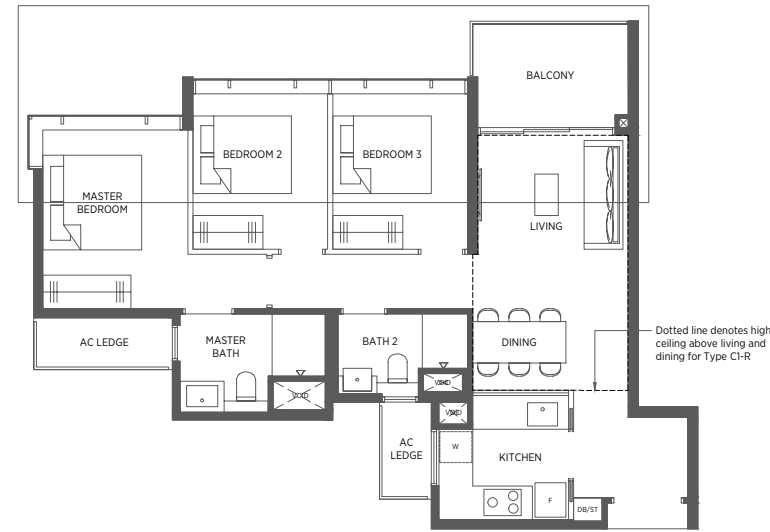


3-Bedroom

TYPE C1 84 sq m | 904 sq ft
TYPE C1-R 100 sq m | 1076 sq ft

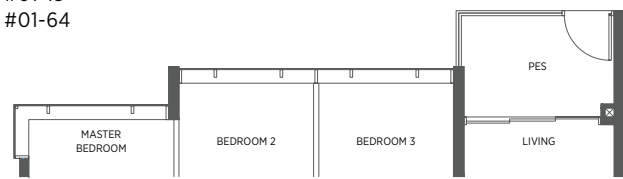
#02-13 to #17-13
 #02-64 to #17-64

Incl. of 16 sq m | 172 sq ft of void area (high ceiling) above living & dining



TYPE C1-P 84 sq m | 904 sq ft

#01-13
 #01-64

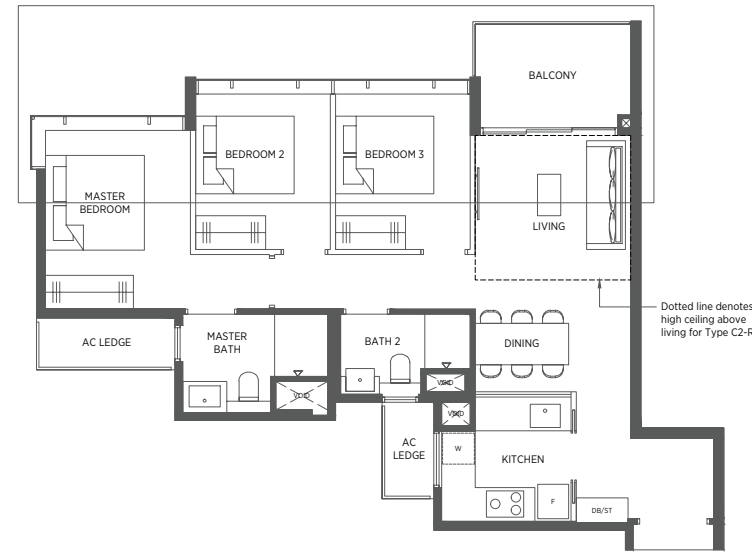


TYPE C2 85 sq m | 915 sq ft
TYPE C2-R 94 sq m | 1012 sq ft

#02-30 to #17-30*
 #02-51 to #17-51
 #02-56 to #17-56

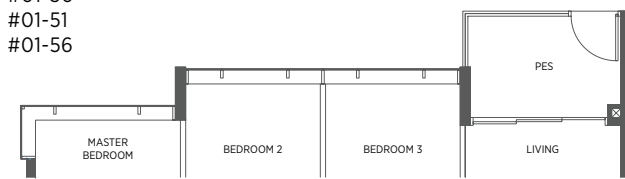
#18-30*
 #18-51
 #18-56

Incl. of 9 sq m | 97 sq ft of void area (high ceiling) above living



TYPE C2-P 85 sq m | 915 sq ft

#01-30*
 #01-51
 #01-56



3-Bedroom

TYPE C3 86 sq m | 926 sq ft
TYPE C3-R 98 sq m | 1055 sq ft
TYPE C3-R1 103 sq m | 1109 sq ft

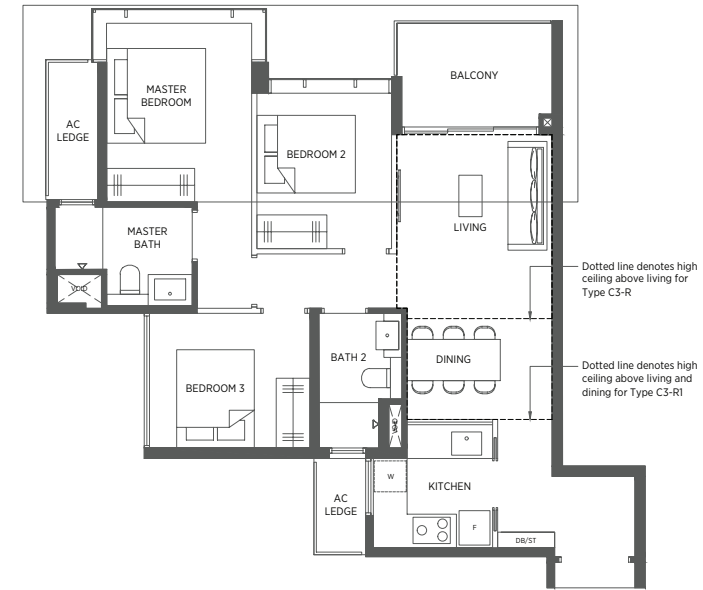
#03-26 to #17-26*
 #02-34 to #17-34*
 #02-38 to #17-38*
 #02-43 to #17-43
 #02-47 to #17-47

#18-26*
 #18-38*
 #18-43

#18-34*
 #18-47

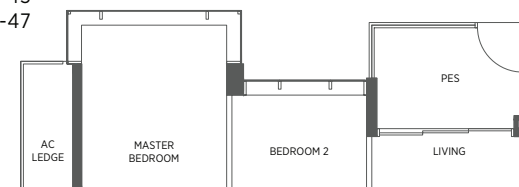
Incl. of 12 sq m | 129 sq ft of void area (high ceiling) above living

Incl. of 17 sq m | 183 sq ft of void area (high ceiling) above living & dining



TYPE C3-P 86 sq m | 926 sq ft

#01-34*
 #01-38*
 #01-43
 #01-47



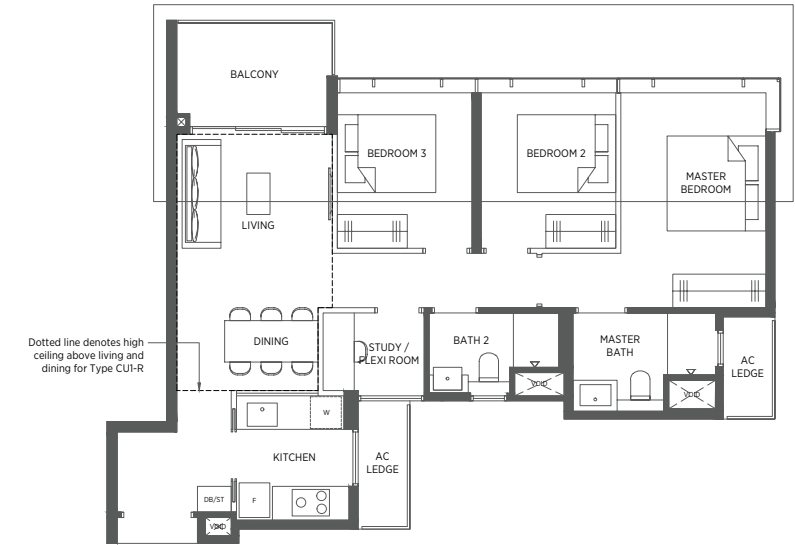
3-Bedroom + Study

TYPE CUI 89 sq m | 958 sq ft
TYPE CUI-R 104 sq m | 1119 sq ft

#02-08 to #17-08
 #02-17 to #17-17
 #02-55 to #17-55
 #02-68 to #17-68
 #02-73 to #17-73*

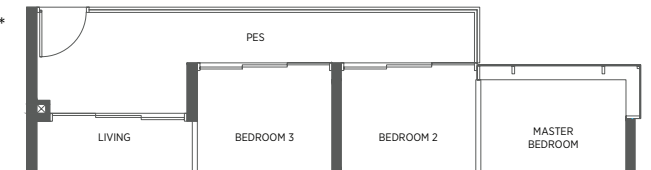
#18-08
 #18-17
 #18-55
 #18-68
 #18-73*

Incl. of 15 sq m | 161 sq ft of void area (high ceiling) above living & dining



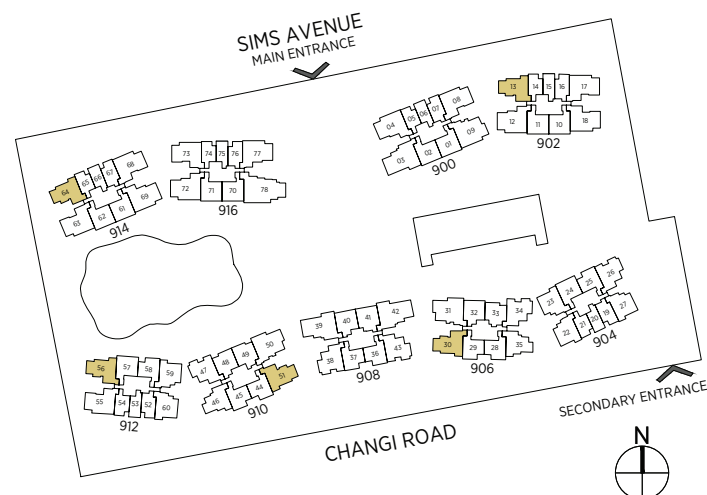
TYPE CUI-P 95 sq m | 1023 sq ft

#01-08
 #01-17
 #01-55
 #01-68
 #01-73*



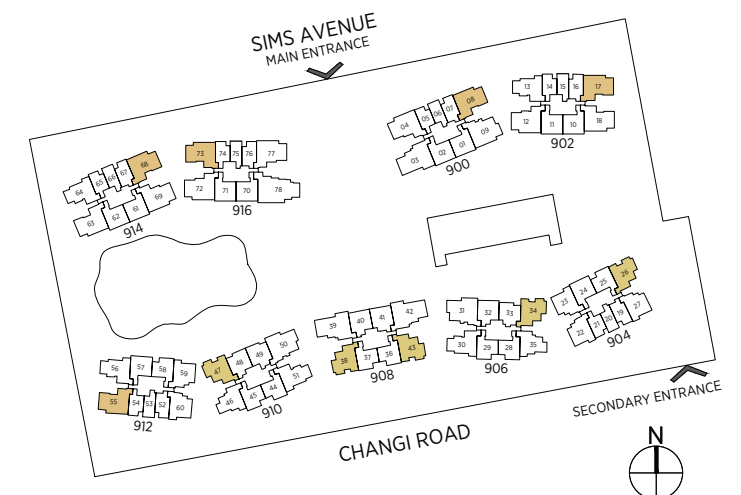
* Denotes mirror image

Area includes a/c ledge, balcony and void area (high ceiling). The plans are subject to change as may be required or approved by the relevant authorities. Areas are approximate measurements only and are subject to final survey. Plans are not drawn to scale and do not form part of the contract.



* Denotes mirror image

Area includes a/c ledge, balcony and void area (high ceiling). The plans are subject to change as may be required or approved by the relevant authorities. Areas are approximate measurements only and are subject to final survey. Plans are not drawn to scale and do not form part of the contract.



3-Bedroom + Study

TYPE CU2 TYPE CU2-R

93 sq m | 1001 sq ft 102 sq m | 1098 sq ft

#02-18 to #17-18*
#02-63 to #17-63

#18-18*
#18-63

Incl. of 9 sq m | 97 sq ft
of void area (high ceiling)
above living



3-Bedroom (Premium)

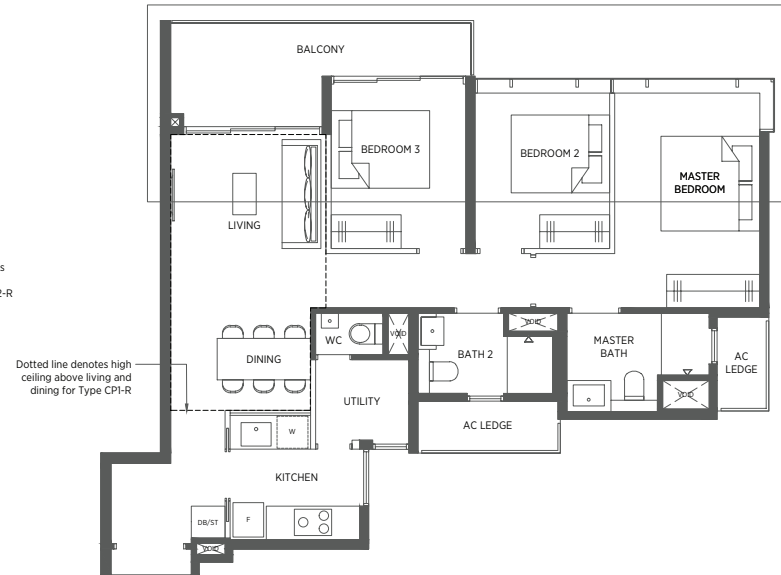
TYPE CP1 TYPE CP1-R

95 sq m | 1023 sq ft 112 sq m | 1206 sq ft

#02-04 to #17-04*
#02-77 to #17-77

#18-04*
#18-77

Incl. of 17 sq m | 183 sq ft
of void area (high ceiling)
above living & dining



3-Bedroom (Premium)

TYPE CP2 TYPE CP2-R

96 sq m | 1033 sq ft 107 sq m | 1152 sq ft

#02-12 to #17-12*
#02-69 to #17-69
#02-72 to #17-72*

#18-12*
#18-69
#18-72*

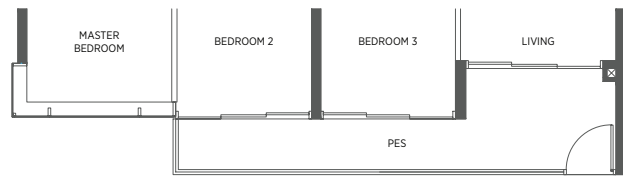
Incl. of 11 sq m | 118 sq ft
of void area (high ceiling)
above living



TYPE CU2-P

96 sq m | 1033 sq ft

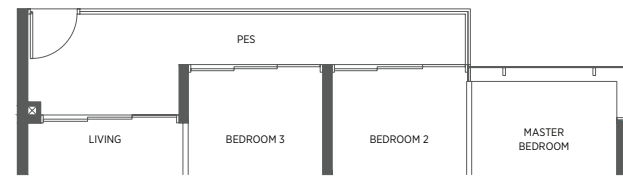
#01-18*
#01-63



TYPE CP1-P

98 sq m | 1055 sq ft

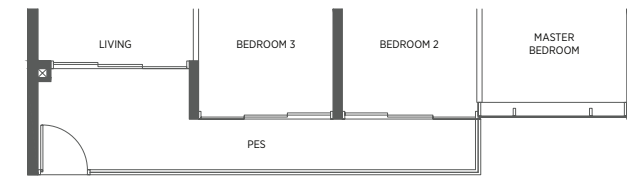
#01-04*
#01-77



TYPE CP2-P

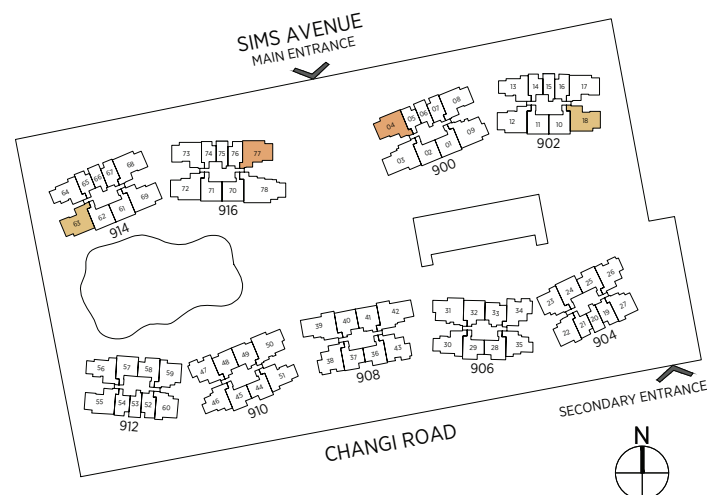
99 sq m | 1066 sq ft

#01-12*
#01-69
#01-72*



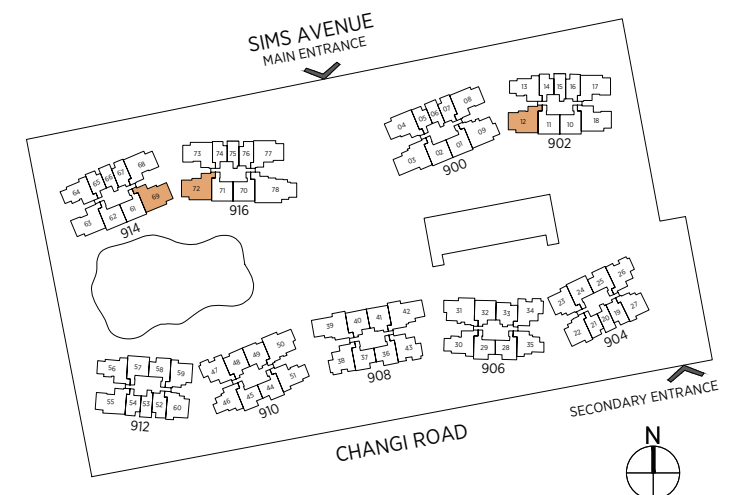
* Denotes mirror image

Area includes a/c ledge, balcony and void area (high ceiling). The plans are subject to change as may be required or approved by the relevant authorities. Areas are approximate measurements only and are subject to final survey. Plans are not drawn to scale and do not form part of the contract.



* Denotes mirror image

Area includes a/c ledge, balcony and void area (high ceiling). The plans are subject to change as may be required or approved by the relevant authorities. Areas are approximate measurements only and are subject to final survey. Plans are not drawn to scale and do not form part of the contract.

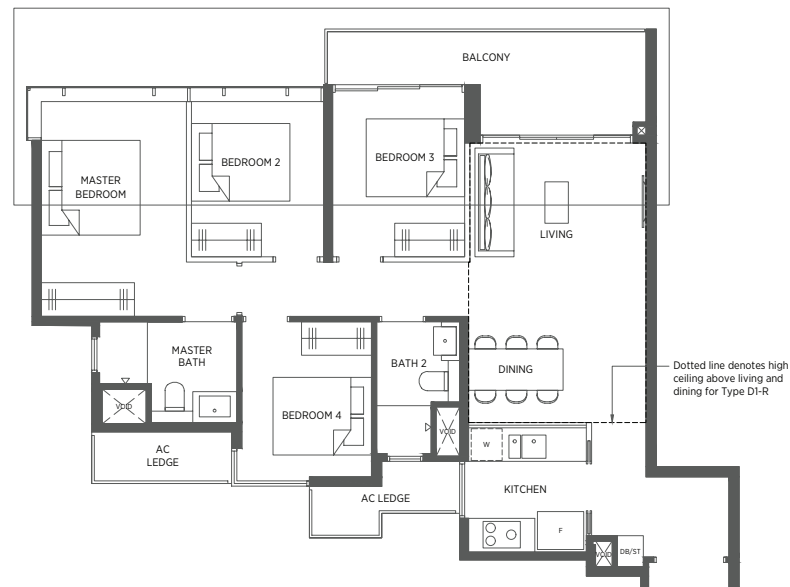


4-Bedroom

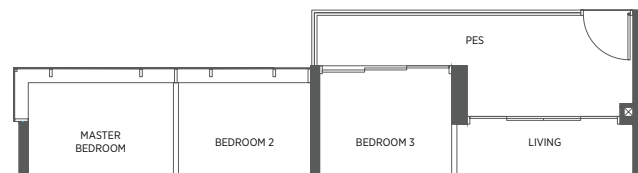
TYPE D1 104 sq m | 1119 sq ft
TYPE D1-R 124 sq m | 1335 sq ft

#02-31 to #17-31
 #02-50 to #17-50*
 #18-31
 #18-50*

Incl. of 20 sq m | 215 sq ft
 of void area (high ceiling)
 above living & dining

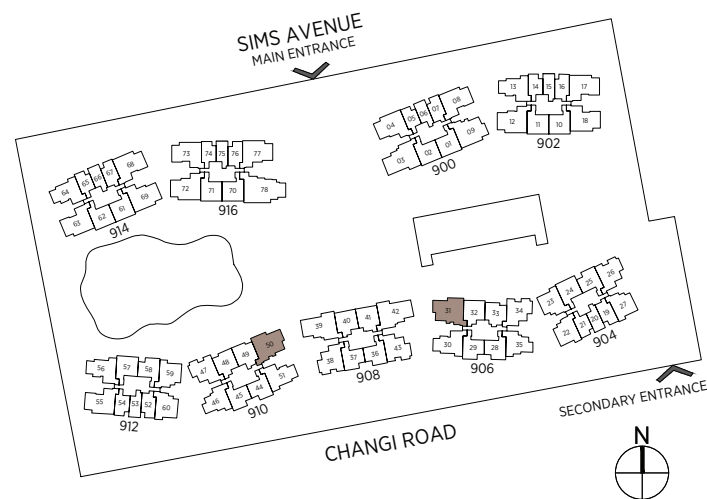


TYPE D1-P
 104 sq m | 1119 sq ft
 #01-31
 #01-50*



* Denotes mirror image

Area includes a/c ledge, balcony and void area (high ceiling). The plans are subject to change as may be required or approved by the relevant authorities. Areas are approximate measurements only and are subject to final survey. Plans are not drawn to scale and do not form part of the contract.

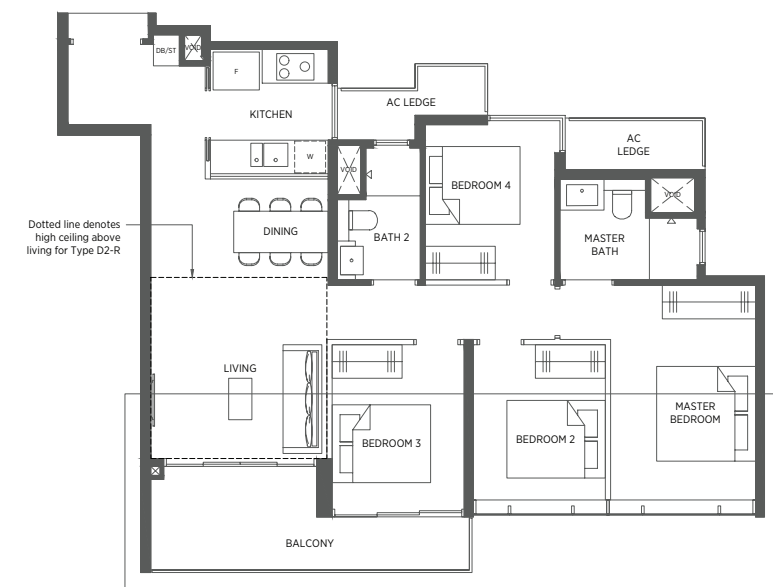


4-Bedroom

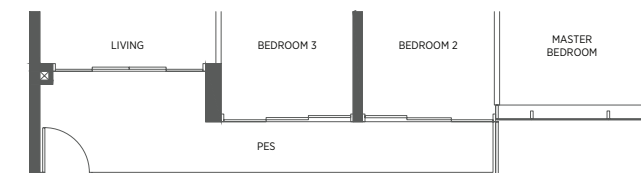
TYPE D2 104 sq m | 1119 sq ft
TYPE D2-R 117 sq m | 1259 sq ft

#02-09 to #17-09
 #18-09

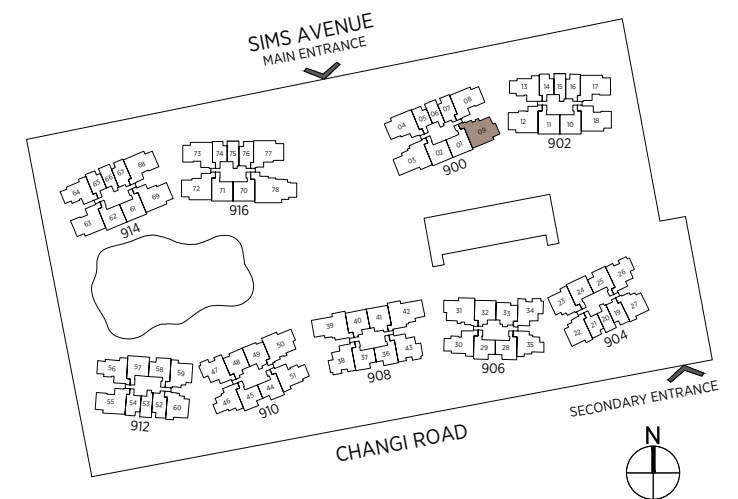
Incl. of 13 sq m | 140 sq ft
 of void area (high ceiling)
 above living



TYPE D2-P
 107 sq m | 1152 sq ft
 #01-09



Area includes a/c ledge, balcony and void area (high ceiling). The plans are subject to change as may be required or approved by the relevant authorities. Areas are approximate measurements only and are subject to final survey. Plans are not drawn to scale and do not form part of the contract.



4-Bedroom (Premium)

TYPE DP TYPE DP-R

114 sq m | 1227 sq ft 131 sq m | 1410 sq ft

#02-03 to #17-03 #18-03
 #02-39 to #17-39* #18-39*
 #02-42 to #17-42 #18-42

Incl. of 17 sq m | 183 sq ft of void area (high ceiling) above living & dining



TYPE DP-P

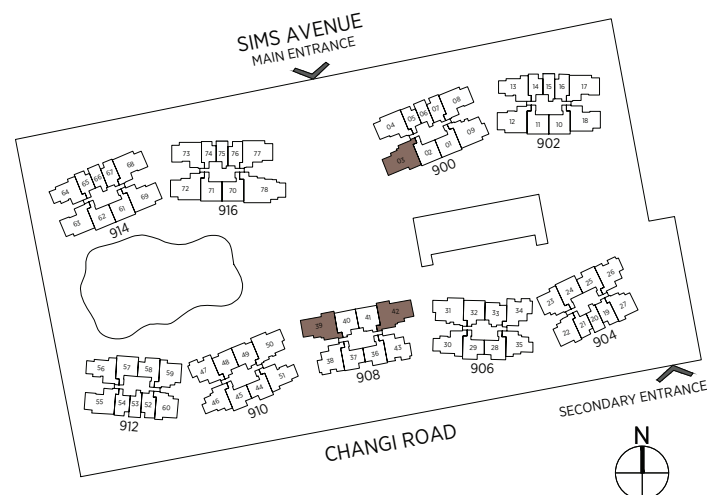
114 sq m | 1227 sq ft

#01-03
 #01-39*
 #01-42



* Denotes mirror image

Area includes a/c ledge, balcony and void area (high ceiling). The plans are subject to change as may be required or approved by the relevant authorities. Areas are approximate measurements only and are subject to final survey. Plans are not drawn to scale and do not form part of the contract.



5-Bedroom

TYPE E TYPE E-R

130 sq m | 1399 sq ft 149 sq m | 1604 sq ft

#02-78 to #17-78 #18-78

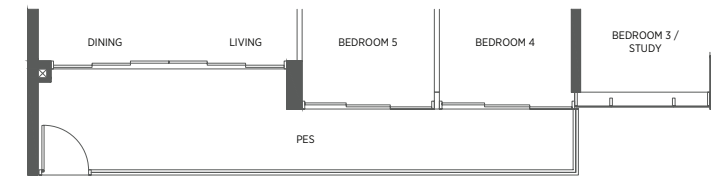
Incl. of 19 sq m | 205 sq ft of void area (high ceiling) above living & dining



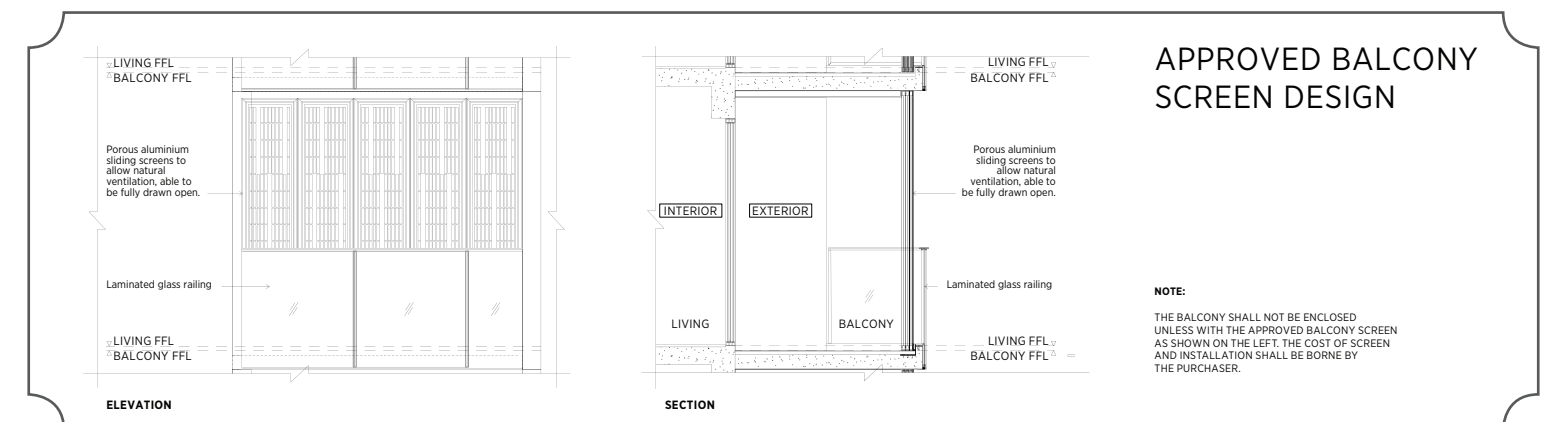
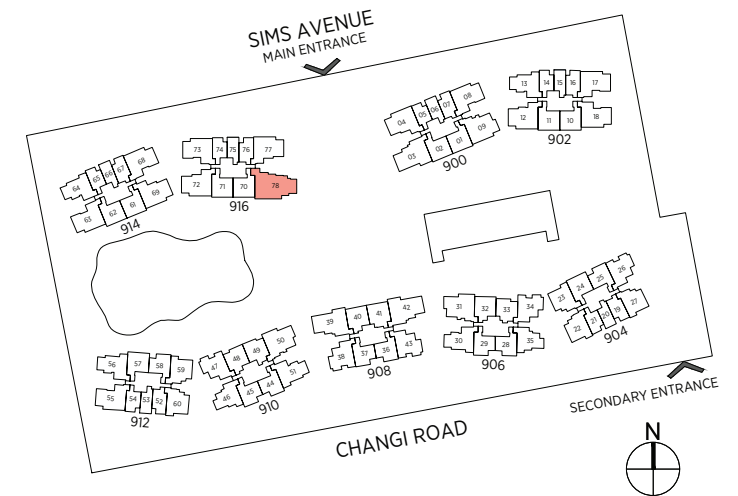
TYPE E-P

137 sq m | 1475 sq ft

#01-78



Area includes a/c ledge, balcony and void area (high ceiling). The plans are subject to change as may be required or approved by the relevant authorities. Areas are approximate measurements only and are subject to final survey. Plans are not drawn to scale and do not form part of the contract.



APPROVED BALCONY SCREEN DESIGN

NOTE:
 THE BALCONY SHALL NOT BE ENCLOSED UNLESS WITH THE APPROVED BALCONY SCREEN AS SHOWN ON THE LEFT. THE COST OF SCREEN AND INSTALLATION SHALL BE BORNE BY THE PURCHASER.